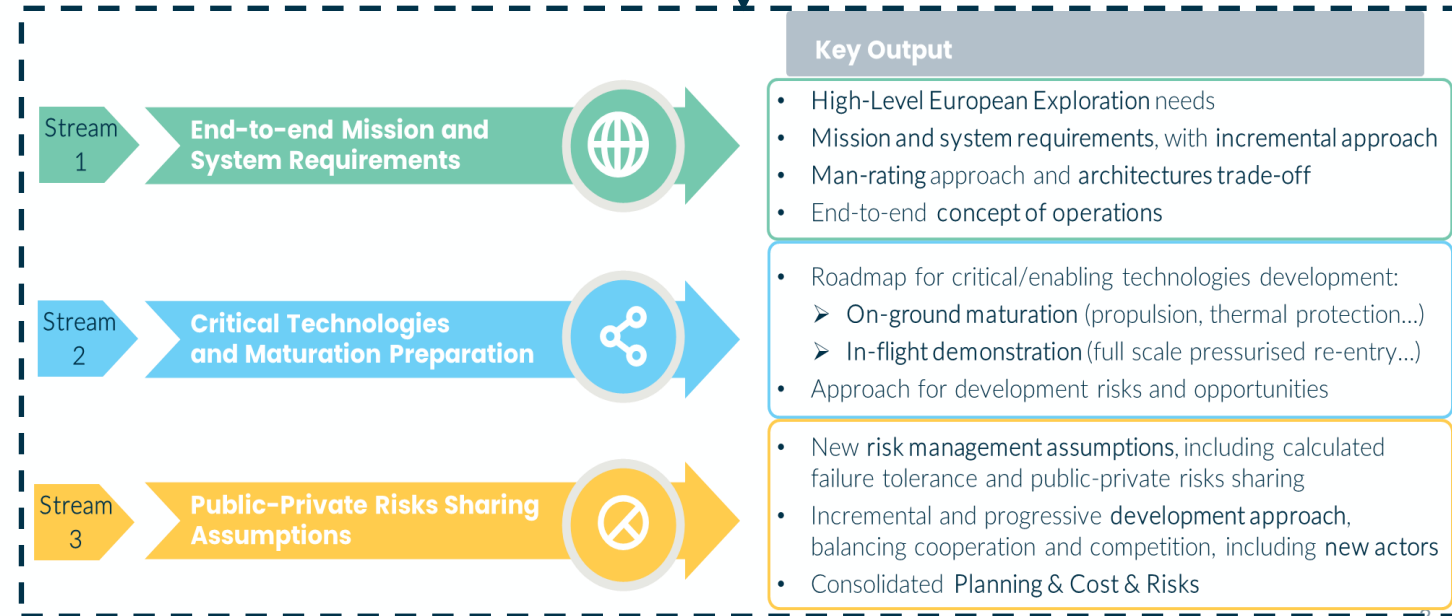
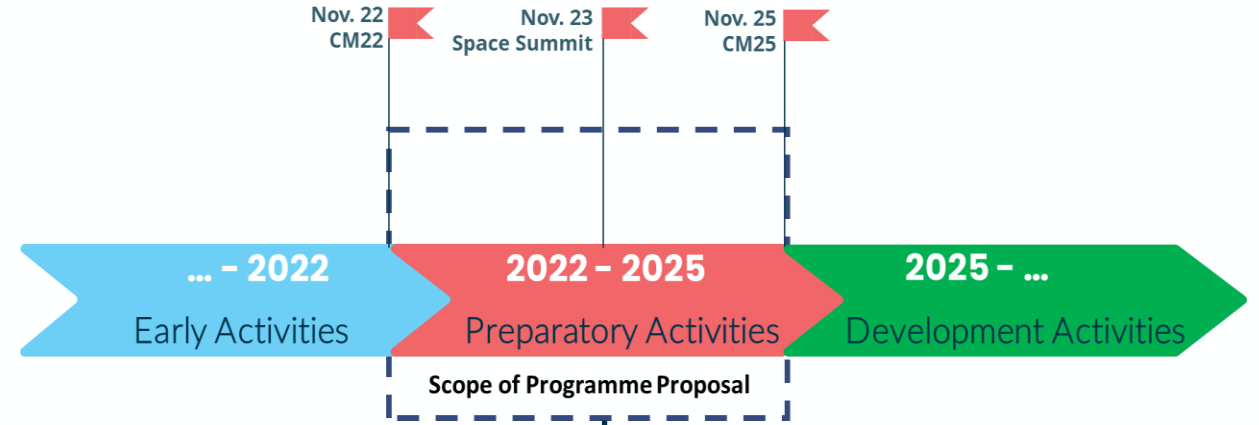


Space Transportation serving Human Exploration

Activities initiated after decision at CM22

→ Preparatory Activities decided and funded at ESA CM22 to investigate a potential European capability for Human Space Transportation

→ Enabling an informed decision on the possibility to acquire such capability in Europe (in full autonomy or in partnership).



An end-to-end implementation logic

Customers' Needs

European Human Space Exploration



Commercial Payloads



Institutional Payloads



ESA Studies

(Legacy and New Players)

Launchers Short Term

Ariane 6 compatibility with Human Space Transportation



Launchers Long Term

Technologies for future European Launch Systems, including Human Space Transportation

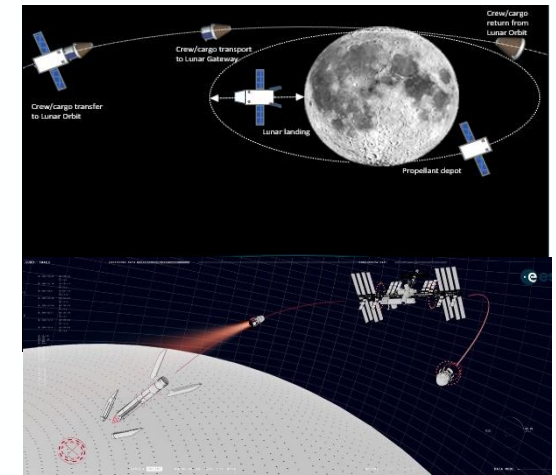
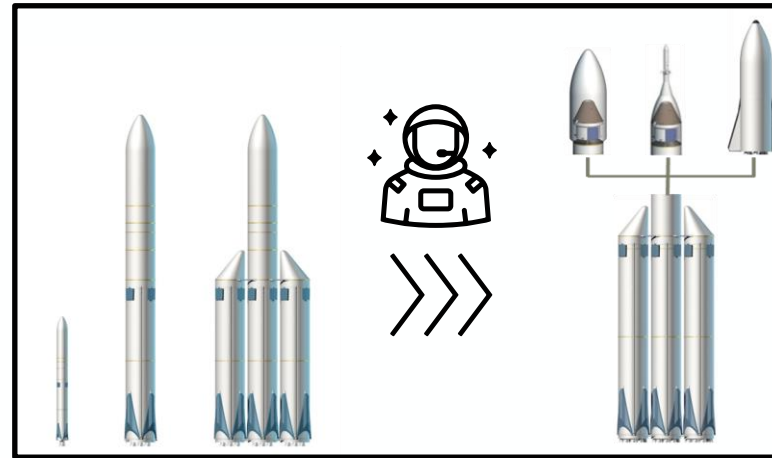


Transportation for Exploration

Architectures and associated elements for Human and Robotic Space Exploration



European Space Transportation Infrastructure



Moving forward: Europe's LEO Cargo Return Service

